

Intel[®] USB 3.0 eXtensible Host Controller Driver

Bring Up Guide

For unified driver

June 2014

Revision 1.0

Intel Confidential



INFORMATION IN THIS DOCUMENT IS PROVIDED IN CONNECTION WITH INTEL PRODUCTS. NO LICENSE, EXPRESS OR IMPLIED, BY ESTOPPEL OR OTHERWISE, TO ANY INTELLECTUAL PROPERTY RIGHTS IS GRANTED BY THIS DOCUMENT. EXCEPT AS PROVIDED IN INTEL'S TERMS AND CONDITIONS OF SALE FOR SUCH PRODUCTS, INTEL ASSUMES NO LIABILITY WHATSOEVER AND INTEL DISCLAIMS ANY EXPRESS OR IMPLIED WARRANTY, RELATING TO SALE AND/OR USE OF INTEL PRODUCTS INCLUDING LIABILITY OR WARRANTIES RELATING TO FITNESS FOR A PARTICULAR PURPOSE, MERCHANTABILITY, OR INFRINGEMENT OF ANY PATENT, COPYRIGHT OR OTHER INTELLECTUAL PROPERTY RIGHT.

A "Mission Critical Application" is any application in which failure of the Intel Product could result, directly or indirectly, in personal injury or death. SHOULD YOU PURCHASE OR USE INTEL'S PRODUCTS FOR ANY SUCH MISSION CRITICAL APPLICATION, YOU SHALL INDEMNIFY AND HOLD INTEL AND ITS SUBSIDIARIES, SUBCONTRACTORS AND AFFILIATES, AND THE DIRECTORS, OFFICERS, AND EMPLOYEES OF EACH, HARMLESS AGAINST ALL CLAIMS COSTS, DAMAGES, AND EXPENSES AND REASONABLE ATTORNEYS' FEES ARISING OUT OF, DIRECTLY OR INDIRECTLY, ANY CLAIM OF PRODUCT LIABILITY, PERSONAL INJURY, OR DEATH ARISING IN ANY WAY OUT OF SUCH MISSION CRITICAL APPLICATION, WHETHER OR NOT INTEL OR ITS SUBCONTRACTOR WAS NEGLIGENT IN THE DESIGN, MANUFACTURE, OR WARNING OF THE INTEL PRODUCT OR ANY OF ITS PARTS.

Intel may make changes to specifications and product descriptions at any time, without notice. Designers must not rely on the absence or characteristics of any features or instructions marked "reserved" or "undefined". Intel reserves these for future definition and shall have no responsibility whatsoever for conflicts or incompatibilities arising from future changes to them. The information here is subject to change without notice. Do not finalize a design with this information.

The products described in this document may contain design defects or errors known as errata which may cause the product to deviate from published specifications. Current characterized errata are available on request.

Contact your local Intel sales office or your distributor to obtain the latest specifications and before placing your product order.

Copies of documents which have an order number and are referenced in this document, or other Intel literature, may be obtained by calling 1-800-548-4725, or go to: <http://www.intel.com/design/literature.htm%20>

All products, computer systems, dates, and figures specified are preliminary based on current expectations, and are subject to change without notice.

This document contains information on products in the design phase of development. Do not finalize a design with this information. Revised information will be published when the product is available. Verify with your local sales office that you have the latest datasheet before finalizing a design.

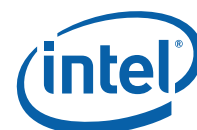
Intel processor numbers are not a measure of performance. Processor numbers differentiate features within each processor family, not across different processor families. See www.intel.com/products/processor_number for details.

Code names featured are used internally within Intel to identify products that are in development and not yet publicly announced for release. Customers, licensees and other third parties are not authorized by Intel to use code names in advertising, promotion or marketing of any product or services and any such use of Intel's internal code names is at the sole risk of the user.

Intel and the Intel logo are trademarks of Intel Corporation in the U.S. and/or other countries.

*Other names and brands may be claimed as the property of others.

Copyright © 2014, Intel Corporation. All rights reserved.



Contents

1	Introduction	5
	1.1 Purpose and Scope of Document	5
	1.2 Acronyms and Terminology	5
	1.3 Reference Documents	6
2	Platform Details	7
	2.1 Driver Architecture Overview	7
3	Driver Installation	9
	3.1 Driver Installation via Installer	9
	3.2 Silent Driver Installation via Installer	14
	3.3 Checking the Driver Version	17
	3.4 Uninstalling the Driver via Control Panel	19
4	Using the USB 3.0 Driver	24
	4.1 How to Check Connected USB devices	24
	4.2 Intel® USB 3.0 Monitor Application	27
	4.3 Intel® USB 3.0 Host Controller Switch Driver	27
	4.4 Next Steps – USB 3.0 Validation and Debug	28

Figures

Figure 1. Intel® USB 3.0 eXtensible Host Controller Driver Stack	7
Figure 2. Welcome Screen	10
Figure 3. License Agreement	11
Figure 4. Readme File Information	12
Figure 5. Setup Progress	13
Figure 6. Setup Completion	14
Figure 7. Installer Help Information	15
Figure 8. Intel® USB 3.0 eXtensible Host Controller Driver Version	18
Figure 9. Intel® USB 3.0 Root Hub Driver Version	19
Figure 10. Control Panel – Uninstall a program	20
Figure 11. Control Panel – Programs List	20
Figure 12. Welcome to the Uninstallation Program	21
Figure 13. Uninstallation Progress	22
Figure 14. Uninstall Setup Completion	23
Figure 15. Device Manager: Devices by type view	24
Figure 16. Device Manager: Devices by connection view	25
Figure 17. Device Manager: USB Device connection view	26



Revision History

Revision Number	Description	Revision Date
0.7	Initial Release.	September 2013
0.8	Alpha Release	October 2013
0.85	Alpha2 Release	December 2013
0.86	Beta Release	March 2014
0.90	ENG 3.0.0.27 Release	May 2014
0.95	ENG 3.0.0.31 Release	May 2014
1.0	PC/PV Release – 3.0.0.34	June 2014

§



1 Introduction

1.1 Purpose and Scope of Document

This document provides installation instructions and general usage of the Intel® USB 3.0 eXtensible Host Controller Driver. It is intended to help OEM and ODM customers setup their platform as they prepare for validation and debug of USB 3.0 devices.

The Intel® USB 3.0 eXtensible Host Controller Driver support the following operating system

Intel® 8 Series Chipset Family
4th Generation Intel® Core™ Processors
Intel® 9 Series Chipset Family
Intel® Pentium® Processor or Intel® Celeron® Processor N- & J- Series
5th Generation Intel® Core™ Processors
Intel® Core™ M Processor:

- Windows* 7 Operating System (both 32-bit and 64-bit versions).

Intel® C220 series chipset family:

- Windows* 7 Operating System (both 32-bit and 64-bit versions).
- Windows* Server 2008 R2 Operating System.
- Windows* Small Business Server 2008 Operating System.

Note: The Intel® USB 3.0 eXtensible Host Controller Driver is not supported on Windows* XP and Windows Vista*. For these operating systems, ensure your BIOS settings have the xHCI Mode set to "Auto" or "Smart Auto". This will reconfigure the USB 3.0 ports to function as USB 2.0 ports using the native Windows* EHCI driver. For more information, see the Platform Controller Hub (PCH) BIOS Specification document.

1.2 Acronyms and Terminology

Term	Description
ACPI	Advanced Configuration and Power Interface
BIOS	Basic Input/Output System
BKC	Best Known Configuration
CRB	Customer Reference Board
IBP	Intel Business Portal (https://businessportal.intel.com)
IHV	Independent Hardware Vendor



Term	Description
PCH	Platform Controller Hub
OS	Operating System
SS	Super Speed
USB	Universal Serial Bus
xHC	eXtensible Host Controller
xHCI	eXtensible Host Controller Interface

1.3 Reference Documents

Document	Document No./Location
USB 3.0 Specification	http://www.usb.org/developers/docs/
Extensible Host Controller Interface (xHCI) Specification for USB 3.0	http://www.intel.com/technology/usb/xhcispec.htm

§

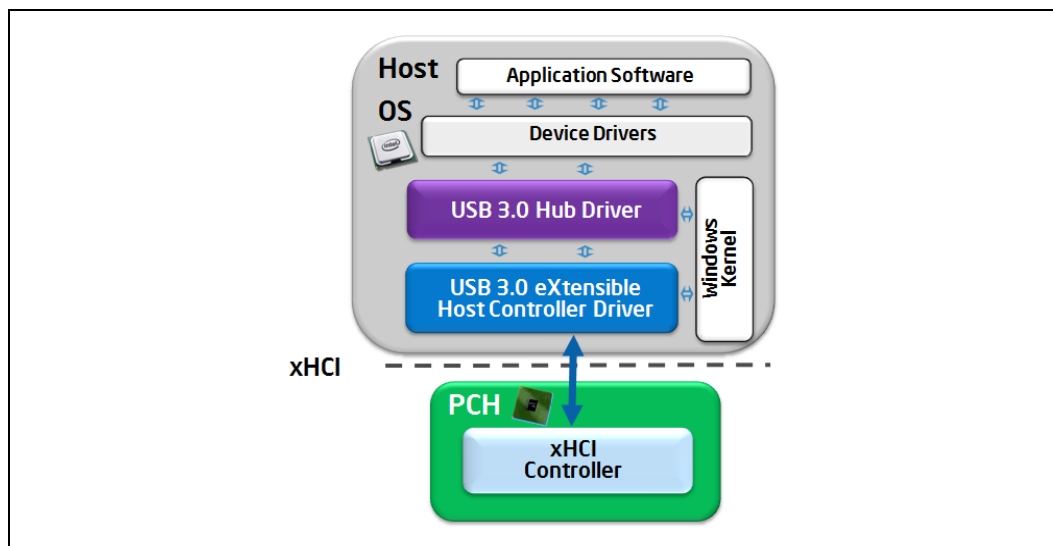
2 Platform Details

2.1 Driver Architecture Overview

As shown in Figure 1, the Intel® USB 3.0 eXtensible Host Controller Driver Stack consists of two main blocks,

- Intel® USB 3.0 eXtensible Host Controller Driver
- Intel® USB 3.0 Hub Driver

Figure 1. Intel® USB 3.0 eXtensible Host Controller Driver Stack



The Intel® USB 3.0 eXtensible Host Controller Driver implements the xHCI specification. Its main functions include:

- Direct control of the USB 3.0 Host Controller hardware by reading and writing memory mapped I/O registers
- Command, Event and Transfer Ring management
- Provide abstraction of HW Interface to other SW layers
- Handles power management of xHCI controller

The Intel® USB 3.0 Hub Driver implements the USB 3.0 specification. Its main functions include:



- Management and control of downstream ports, both USB 3.0 and USB 2.0 high/full/low-speed, on the root hub and external hubs
 - Servicing connection status change
 - Managing port power
- Association of USB 3.0 and USB 2.0 parts of external USB 3.0 hub
- USB bus enumeration (exposing USB devices to the OS)
- Exposing USB Driver Interface (USBDI) to class drivers
- I/O requests and USB Request Block (URB) processing
- Interfaces with 3rd party device drivers

Note that there are different kinds of device drivers. Most of them (for example, Microsoft* inbox class drivers) are running in kernel space. There are also some drivers operating in user space, usually provided by Independent Hardware Vendors (IHV).



3 Driver Installation

Note: A supported Operating System must be installed prior to the installation of the Intel® USB 3.0 eXtensible Host Controller Driver.

There are two different methods to install the Intel® USB 3.0 eXtensible Host Controller Driver for this release:

1. Driver Installation via Installer
2. Silent Driver Installation via Installer

There is only one method to uninstall the Intel® USB 3.0 eXtensible Host Controller Driver: Uninstalling the Driver via Control Panel

Note: Uninstallation of the Intel® USB 3.0 eXtensible Host Controller driver through the Device Manager is not a supported method and it's not validated. Do not uninstall the Intel® USB 3.0 eXtensible Host Controller driver through the Device Manager.

Please see the following subsections for more details.

3.1 Driver Installation via Installer

Follow the steps listed below for driver installation via installer:

1. Copy and unzip the Intel® USB 3.0 eXtensible Host Controller Driver onto the platform under test.

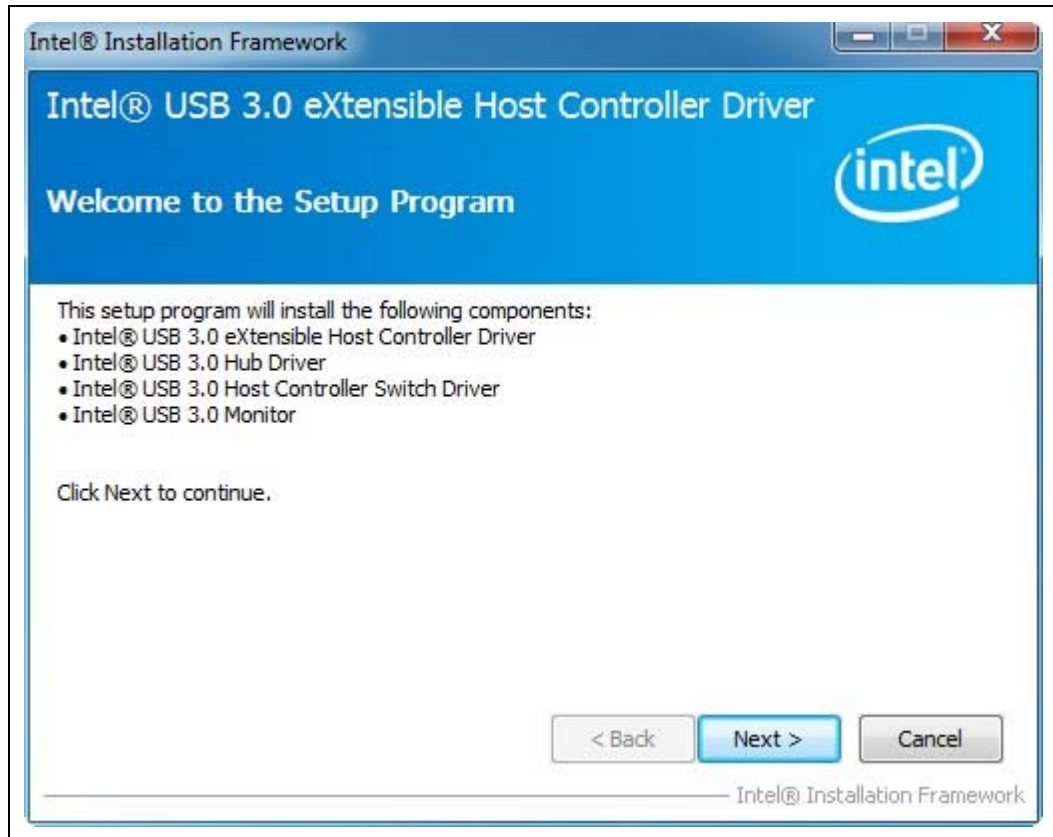
Note: **WARNING** – Do not run this driver's installer (Setup.exe) from a USB storage device (ie. external USB hard drive or USB thumb drive). For proper installation, please copy driver files to a local hard drive folder and run from there.

2. Locate the "Setup.exe" file.
3. Right click on the executable and select 'Run as administrator' option from the menu to start the installer and then click on 'Yes' button in User Account Control pop-up window.



4. You should see welcome screen with component details as shown in Figure 2. Click 'Next >' button to continue the installation.

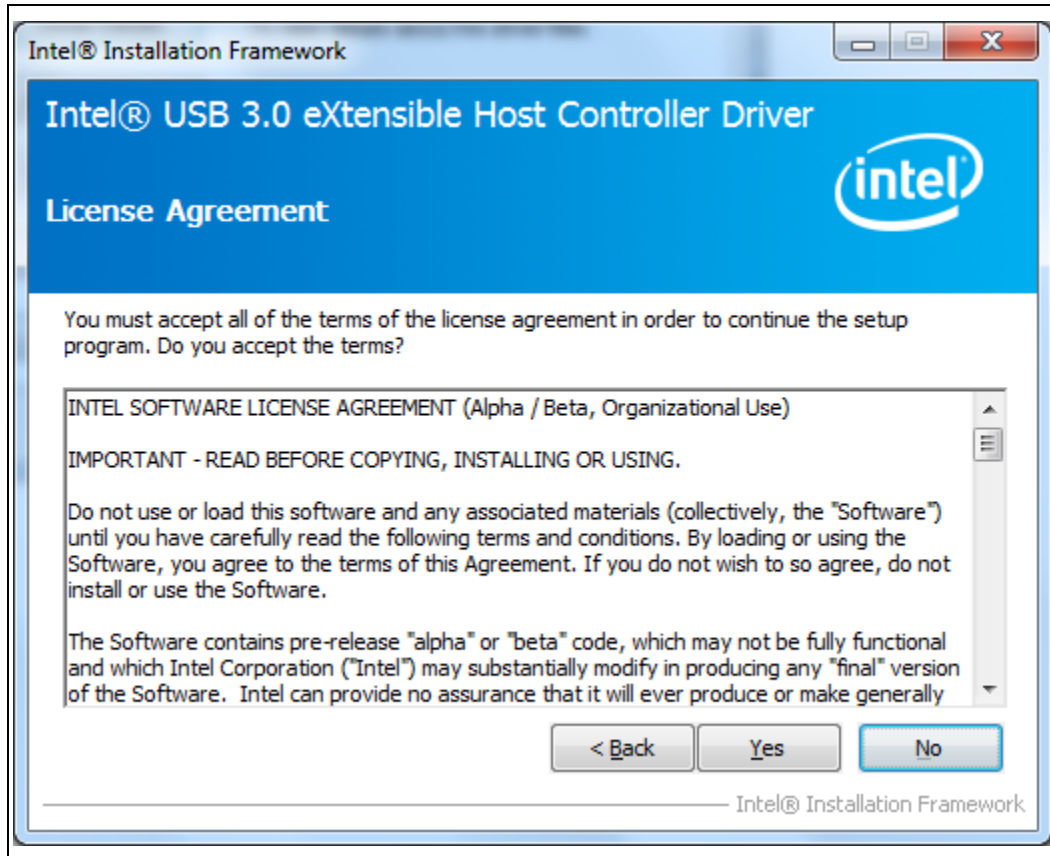
Figure 2. Welcome Screen





5. Next, you should see license agreement screen as shown in Figure 3. Please review the license agreement and if you accept the license terms then click on 'Yes' button to continue the installation.

Figure 3. License Agreement





6. Next, you should see Readme File Information screen with details on system requirements and installer information as shown in Figure 4. Click on 'Next >' button to continue the installation.

Note: **WARNING** – Do not run this driver’s installer (Setup.exe) from a USB storage device (ie. external USB hard drive or USB thumb drive). For proper installation, please copy driver files to a local hard drive folder and run from there.

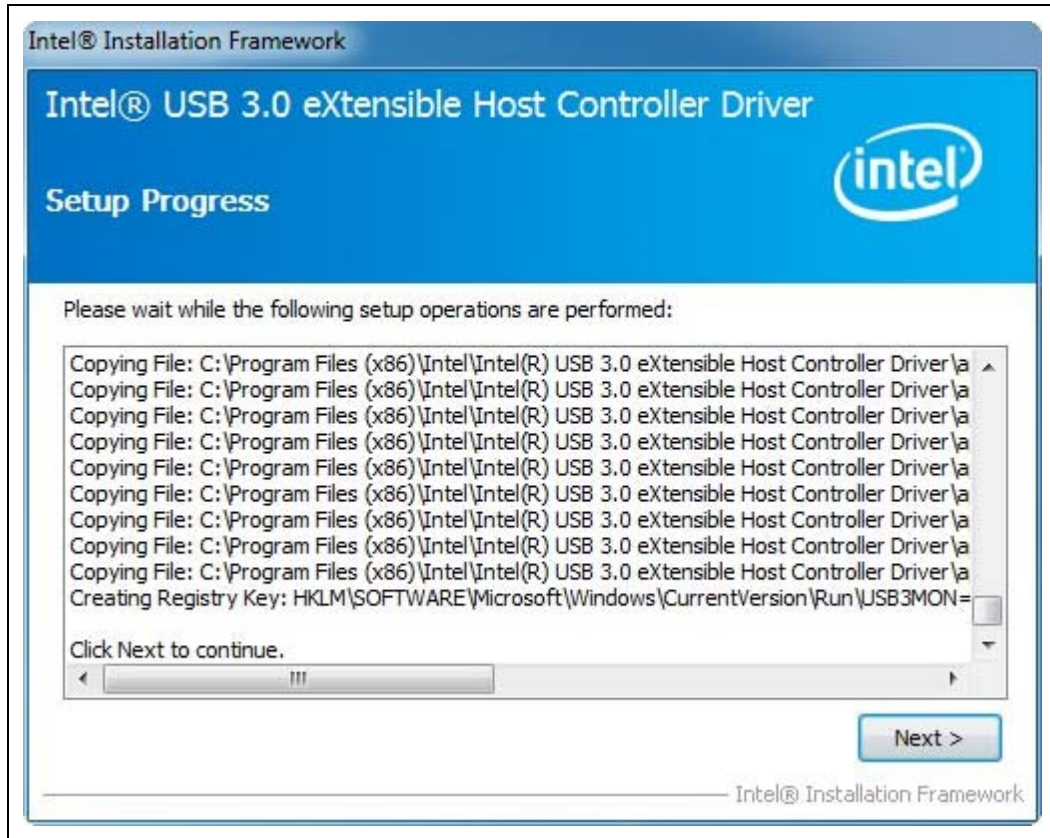
Figure 4. Readme File Information





7. Then, installer will perform various installation operations and show progress in Setup Progress screen. When installation is complete, you should see screen as shown in Figure 5. Click on 'Next >' button to continue.

Figure 5. Setup Progress



8. After successful installation, you should see setup completion screen as shown in Figure 6. Click on 'Finish' button to restart the system.

Figure 6. Setup Completion



9. After the system has booted, you can refer to section 3.3 to check the driver version.

3.2 Silent Driver Installation via Installer

Follow the steps listed below for silent driver installation via installer:

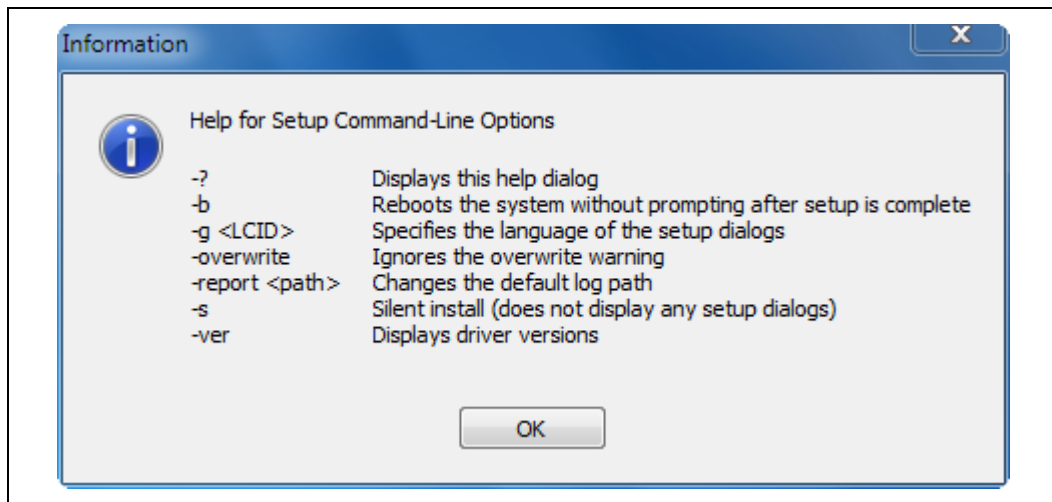
1. Copy and unzip the Intel® USB 3.0 eXtensible Host Controller Driver onto the platform under test.

Note: **WARNING** – Do not run this driver’s installer (Setup.exe) from a USB storage device (ie. external USB hard drive or USB thumb drive). For proper installation, please copy driver files to a local hard drive folder and run from there.



2. Open a Command Prompt (cmd.exe) with administrator rights (ie. Run as administrator). Click on 'Yes' button in User Account Control pop-up window.
3. Change the directory to where you unzipped the driver in Step 1 and then change to the "Setup.exe" directory.
4. To see all available options for the Installer, run command "Setup.exe -?". You should see a window pop-up similar to Figure 7. For the "-g <LCID>" option which specifies the language of the setup dialogs, the LCID list is shown in below table. Click OK to continue.

Figure 7. Installer Help Information



Note: The "-report <path>" option allows users to change where the installation log file is saved. Otherwise, Intel driver installation log files are stored in the general location of 'C:\Intel\Logs'.



LCID	Language
0401	Arabic
0804	Chinese (Simplified)
0404	Chinese (Traditional)
0405	Czech
0406	Danish
0413	Dutch
0409	English (USA)
040B	Finnish
040C	French
0407	German
0408	Greek
040D	Hebrew
040E	Hungarian
0410	Italian

LCID	Language
0411	Japanese
0412	Korean
0414	Norwegian
0415	Polish
0416	Portuguese (Brazil)
0816	Portuguese (Standard)
0419	Russian
0C0A	Spanish
041B	Slovak
0424	Slovenian
041D	Swedish
041E	Thai
041F	Turkish

5. Run command "Setup.exe -b -s" to start the silent installation. This process should take about 1 min to complete. When silent installation is complete, the system will automatically reboot.
6. After the system has booted, you can refer to section 3.3 to check the driver version.

Other silent installation examples are:

- > Setup.exe -s -overwrite -report C:\Temp
- > Setup.exe -s -g 0404
- > Setup.exe -s -s0: this will return a code "0" instead of "14" (0xA00D)



For the installation, a full listing of return values can be found in the following table. The 'ResultCode' value can be found at the end of the installation log file.

ResultCode	Description
0x0	Success
0xA001	Bad command line
0xA002	User is not an administrator
0xA003	The OS is not supported for this product
0xA005	No devices were found that matched package INF files
0xA007	User refused a driver downgrade
0xA009	User canceled the installation
0xA00A	Another install is already active
0xA00B	Error while extracting files
0xA00C	Nothing to do
0xA00D	A system restart is needed before setup can continue
0xA00E	Setup has completed successfully but a system restart is required
0xA00F	Setup has completed successfully and a system restart has been initiated
0xA010	A bad file path was provided
0xA011	Fatal error occurred while installing a driver
Win32 error code	General install failure

3.3 Checking the Driver Version

To check the Intel® USB 3.0 eXtensible Host Controller Driver version:

1. Open Device Manager.
2. Click the "Universal Serial Bus controllers" arrow to open the list of USB devices.
3. You can check either the "Intel(R) USB 3.0 eXtensible Host Controller" device or the "Intel(R) USB 3.0 Root Hub" device. Double click on the device you want.
4. Select the "Driver" tab and the Driver Version will be listed (see Figure 8 and Figure 9).



Figure 8. Intel® USB 3.0 eXtensible Host Controller Driver Version

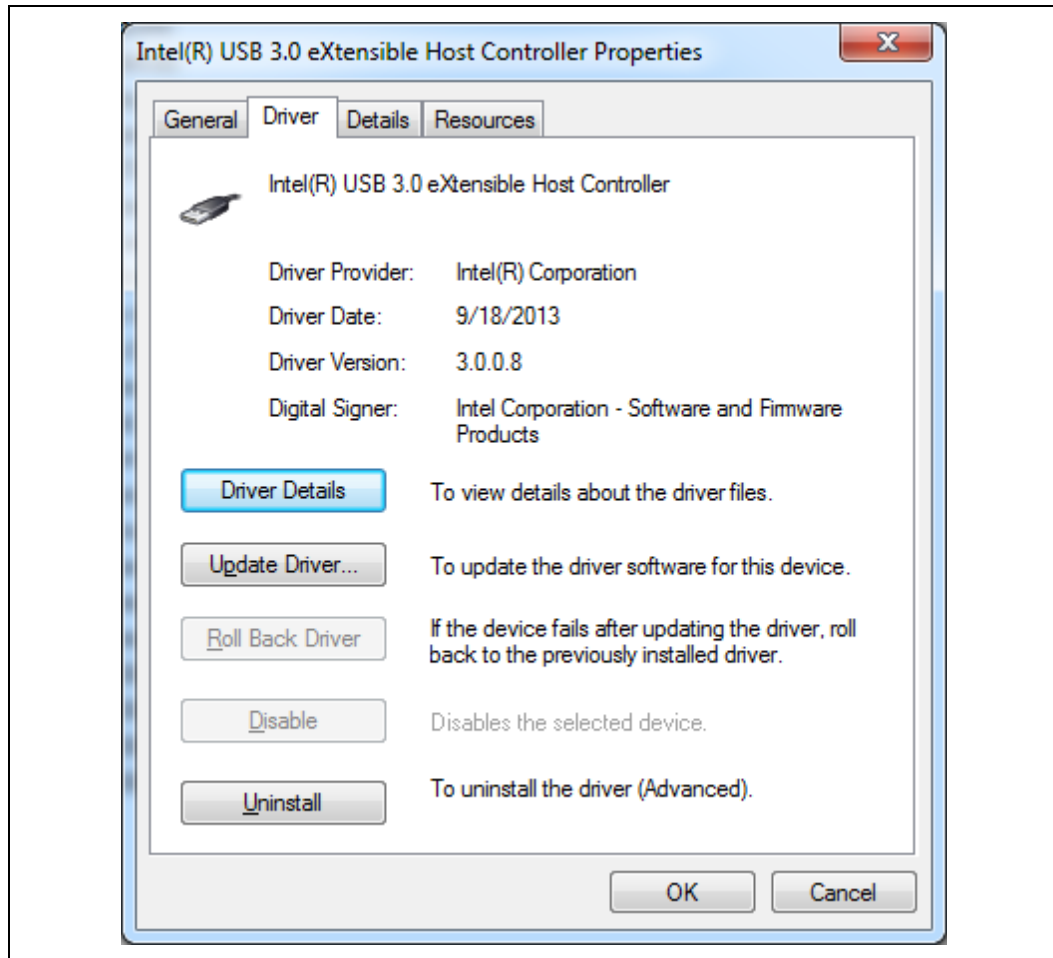
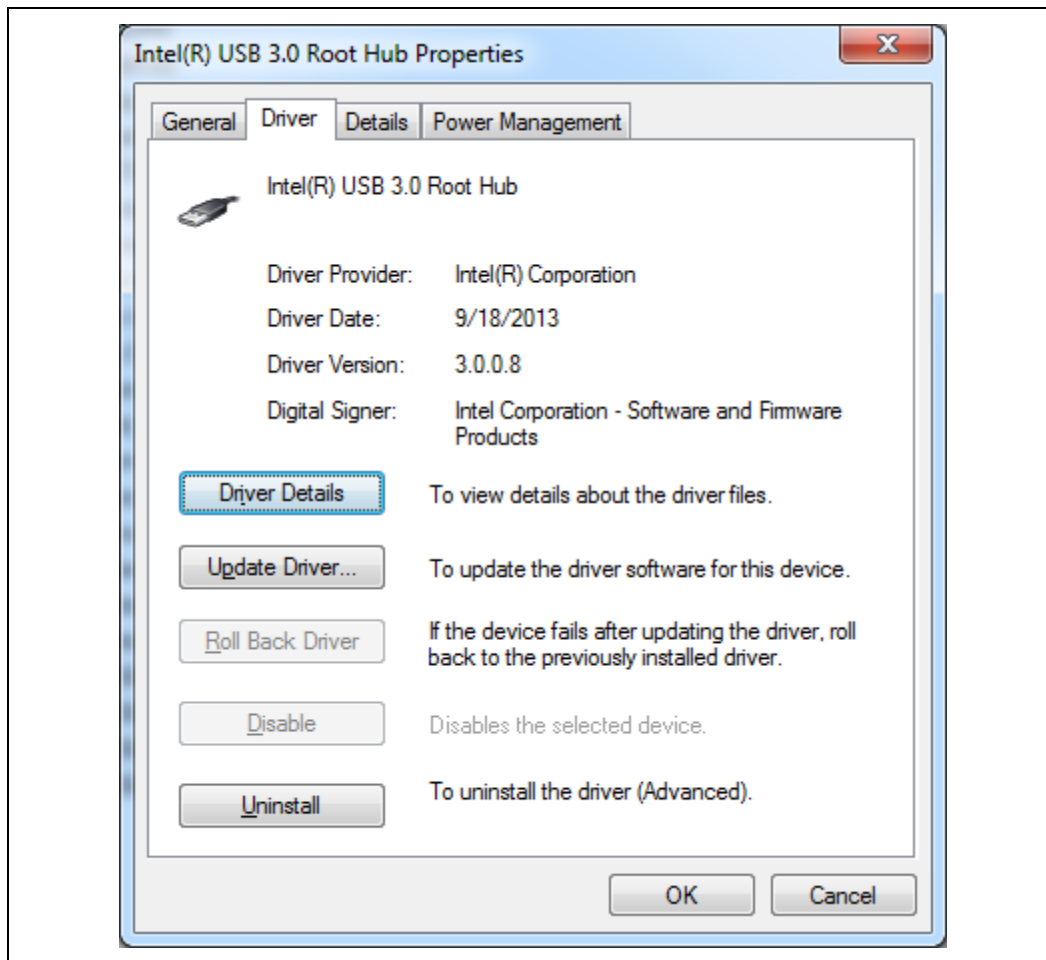




Figure 9. Intel® USB 3.0 Root Hub Driver Version



3.4 Uninstalling the Driver via Control Panel

Follow the steps listed below to uninstall the driver via the Control Panel:

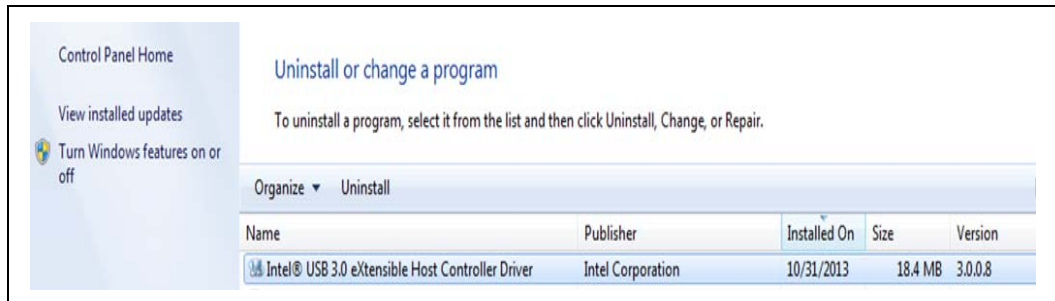
1. Open the Control Panel window (Start -> Control Panel).
2. If the Control Panel window is shown in 'Category' view, then select "Uninstall a program" as shown in Figure 10. Otherwise if the Control Panel window is shown in 'icon' view, then select "Programs and Features".

Figure 10. Control Panel – Uninstall a program



3. On the next window, select the “Intel® USB 3.0 eXtensible Host Controller Driver” (see Figure 11) from the list of programs. Then click the “Uninstall” button.

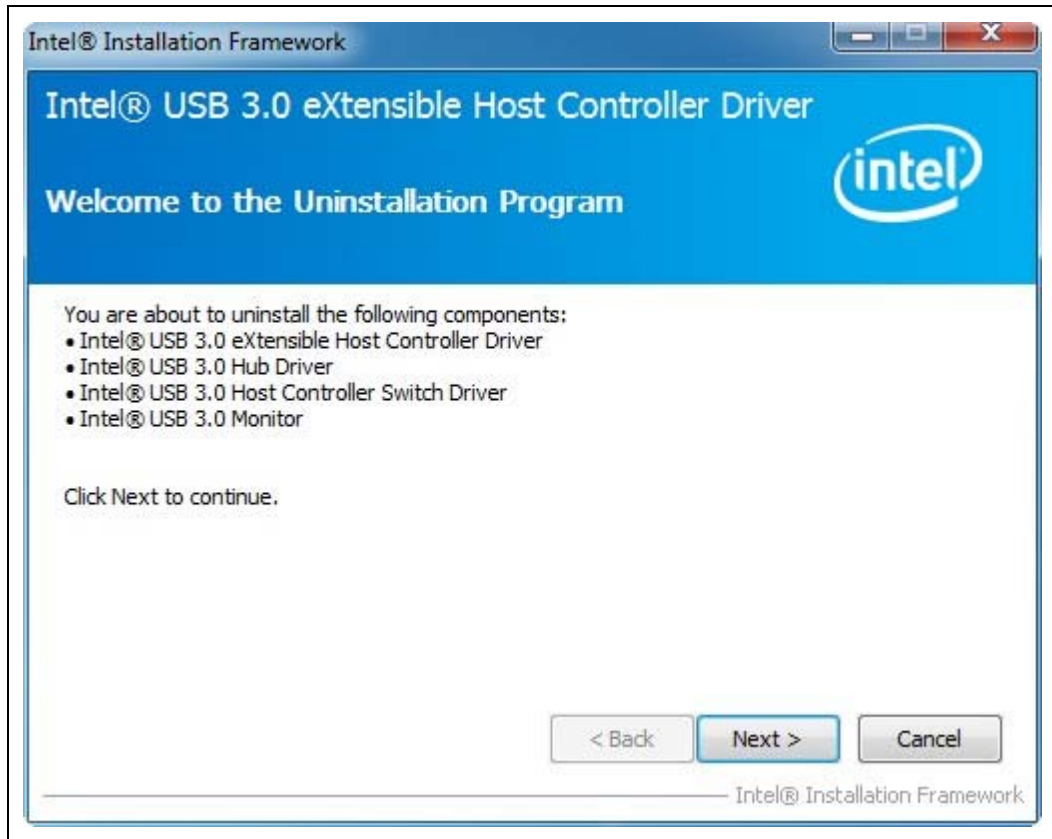
Figure 11. Control Panel – Programs List





4. You should see the Welcome to Uninstallation Program pop-up window with component details as shown in Figure 12. Click 'Next >' button to continue.

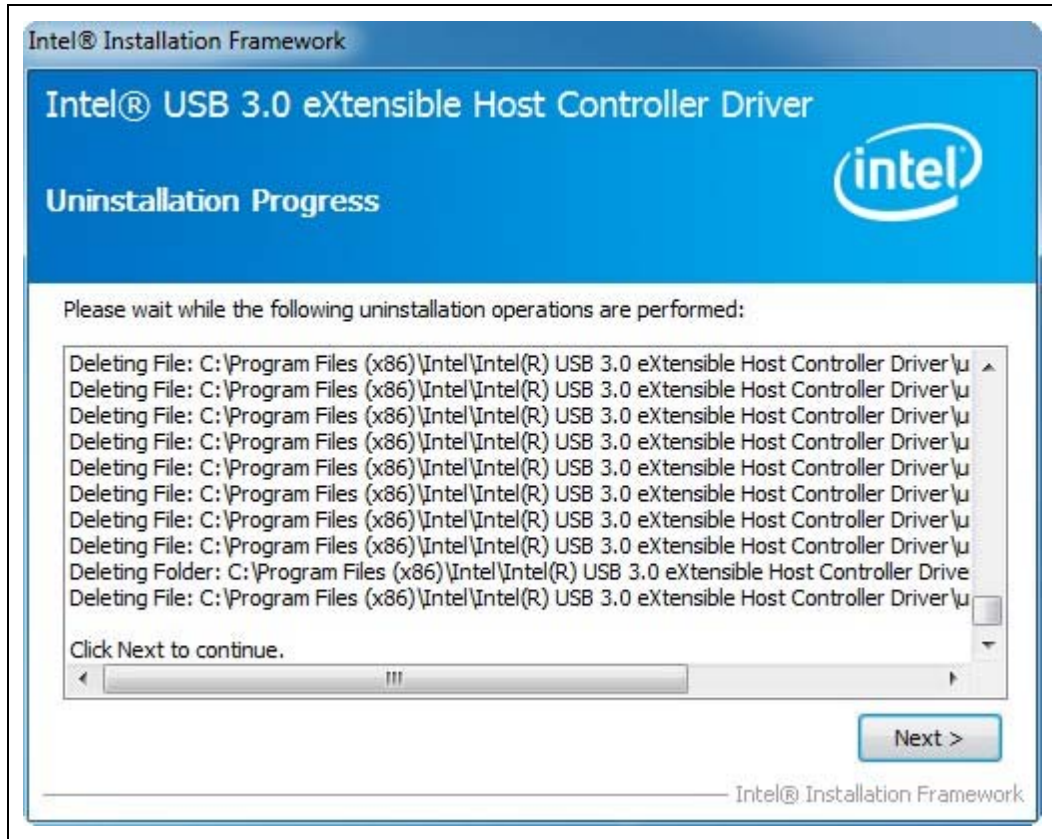
Figure 12. Welcome to the Uninstallation Program





5. Next, installer will perform various operations and show progress in Uninstallation Progress screen. When the uninstall is complete, you should see screen as shown in Figure 13. Click on 'Next >' button to continue.

Figure 13. Uninstallation Progress





6. After successful uninstall, you should see setup completion screen as shown in Figure 14. Click on 'Finish' button to restart the system.

Figure 14. Uninstall Setup Completion



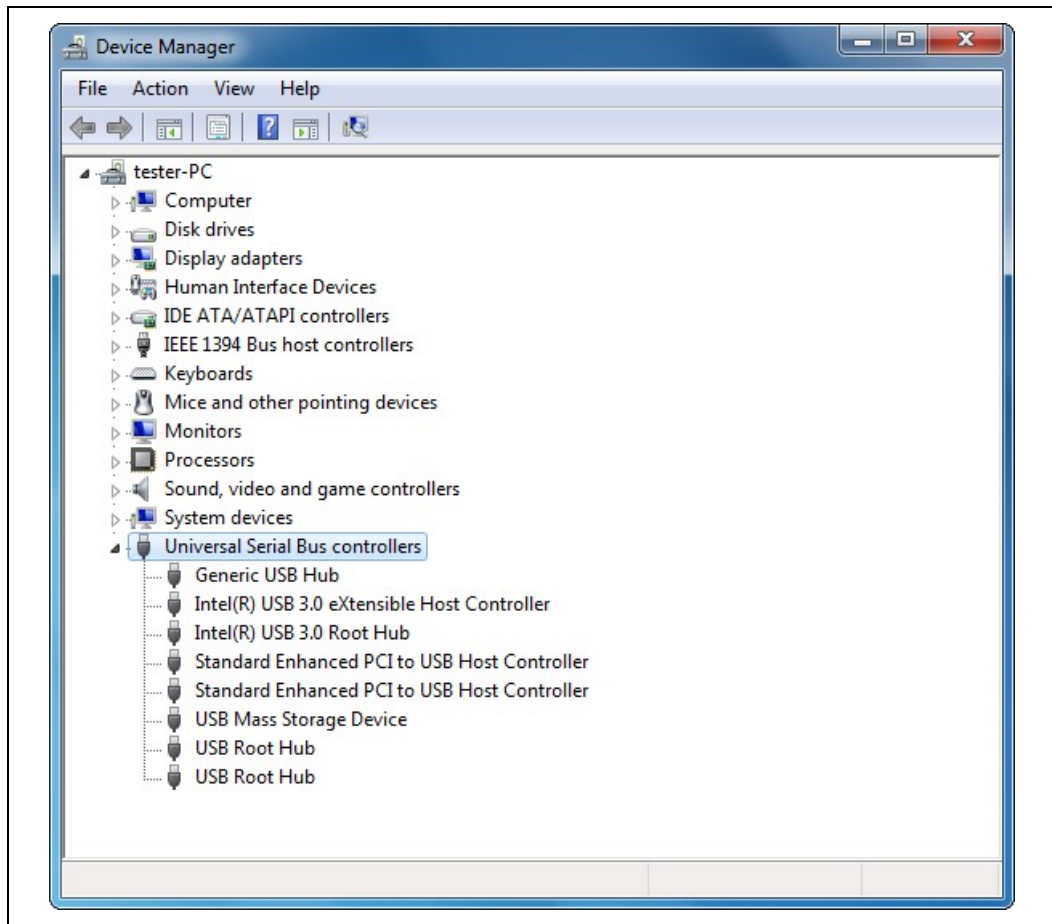
S

4 Using the USB 3.0 Driver

4.1 How to Check Connected USB devices

Since your platform may have other USB 2.0 and USB 3.0 controllers, it is often useful to check which controller a USB device is actually connected to. When you first open the Device Manager, the default view is “Devices by type” as shown in Figure 15.

Figure 15. Device Manager: Devices by type view

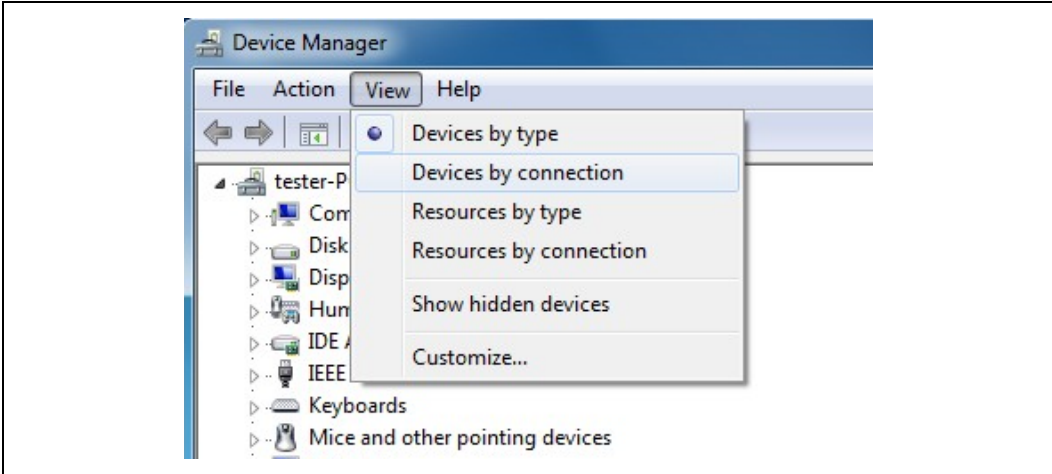


If you connected a USB 3.0 thumb drive (USB Mass Storage Device) to one of the Intel USB 3.0 ports, you'll see it listed under the “Universal Serial Bus controllers” category.



To check which USB controller this device is connected to, click "View" and select "Devices by connection" as shown in Figure 16.

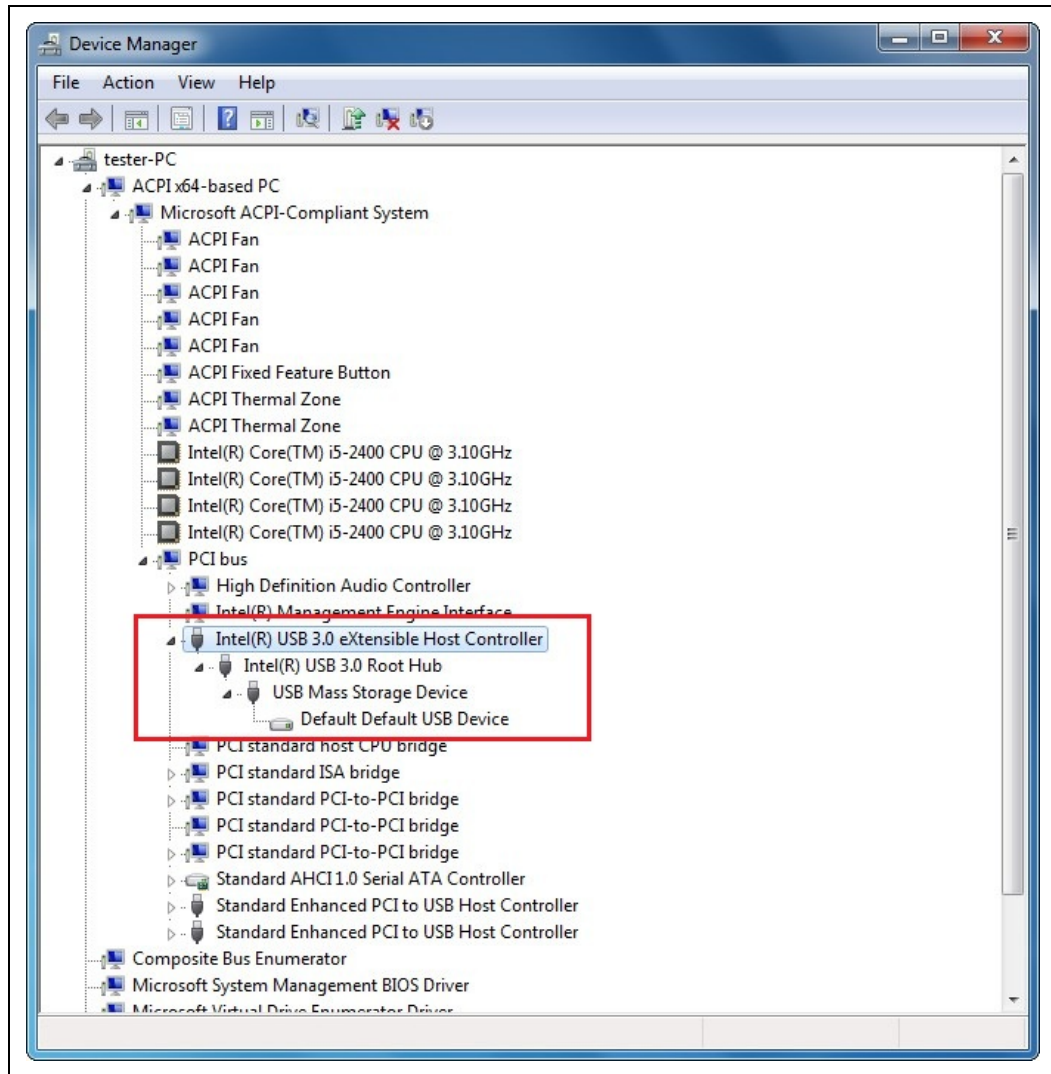
Figure 16. Device Manager: Devices by connection view

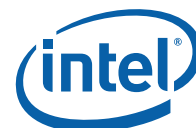




The Device Manager View will change to the connection view (Figure 17) which easily allows you to see which USB 3.0 controller is being used.

Figure 17. Device Manager: USB Device connection view





4.2 Intel® USB 3.0 Monitor Application

The Intel® USB 3.0 eXtensible Host Controller Driver release kit includes the Intel® USB 3.0 Monitor application. It will be installed by the Intel® USB 3.0 eXtensible Host Controller Driver Installer (see section 3.1 for more information about the Installer).

The main functions of this application are:

- Monitors plug and play status of all USB 3.0 Ports
- Generates pop-up message for event notification

The 6 pop-up messages are listed in the following table

Pop-up Message	Description
Bandwidth allocation failure	The eXtensible Host Controller cannot assign sufficient bandwidth on the bus for the attached device. Click on pop-up message for possible workaround to adjust bandwidth settings.
Device can run faster	Super Speed capable device is attached to a USB 2.0 only port on the system. User should move the Super Speed device to a Super Speed capable port.
Enumeration failure	Enumeration failure occurred with USB device.
Hub too deep	As per the USB 3.0 specification, the maximum hub depth is 5. This pop-up notification will be displayed when users exceed the maximum hub depth.
Insufficient power	There is insufficient power for all USB device(s) and hub(s) connected to the USB port. Move some devices to another USB port.
Overcurrent	The USB device is drawing excessive current from the USB port. Check USB device to ensure it is operating normally and try on another USB port.

4.3 Intel® USB 3.0 Host Controller Switch Driver

The Intel® USB 3.0 eXtensible Host Controller Driver release kit includes the Intel® USB 3.0 Host Controller Switch Driver. This driver uses BIOS ACPI method to control dynamic switching from EHCI to xHCI during OS boot. It will be installed by the Intel® USB 3.0 eXtensible Host Controller Driver Installer (see section 3.1 for more information about the Installer). For more information about the Switch Driver, see the Wildcat Point-LP Platform Controller Hub (PCH) BIOS Specification document.



4.4 Next Steps – USB 3.0 Validation and Debug

Please see the document “Intel® USB 3.0 eXtensible Host Controller Driver - Customer Validation and Debug Guide” for information on driver validation and debug methods. This document is available on IBP (Doc #477627), please contact your Intel FAE for access.

§